



FUSION HALO



FUSION HALO

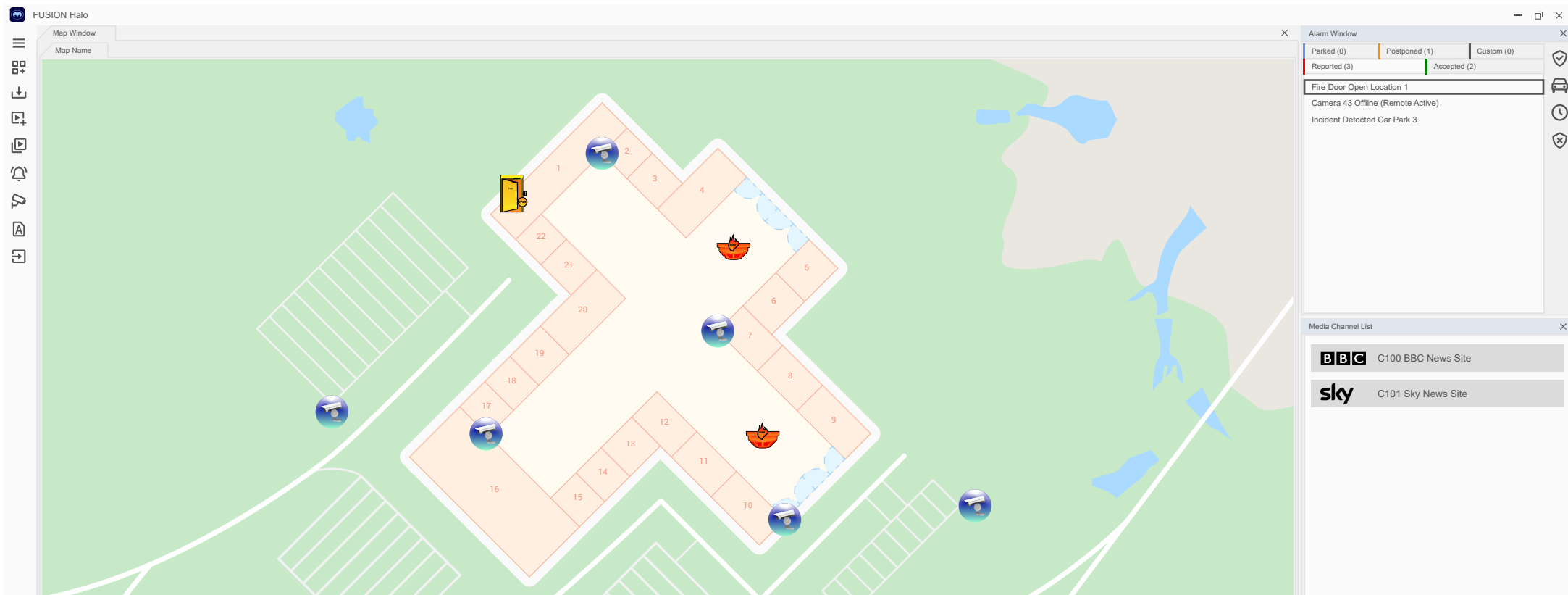
Halo is the latest edition of our FUSION video management software that provides the ultimate platform to unify your security.

Designed to simplify your operations, Halo blends powerful video surveillance with physical security systems in a single intuitive interface to enhance resource management and efficiency.

UNIFY YOUR SECURITY

FUSION Halo was created for one purpose – to unify your security systems and unite your control room.

Through a single interface, you can easily manage your video surveillance, physical security systems and even remote sites – all visualised on high-quality graphical maps to provide a complete overview of your environment and your resources.



Supported integrations

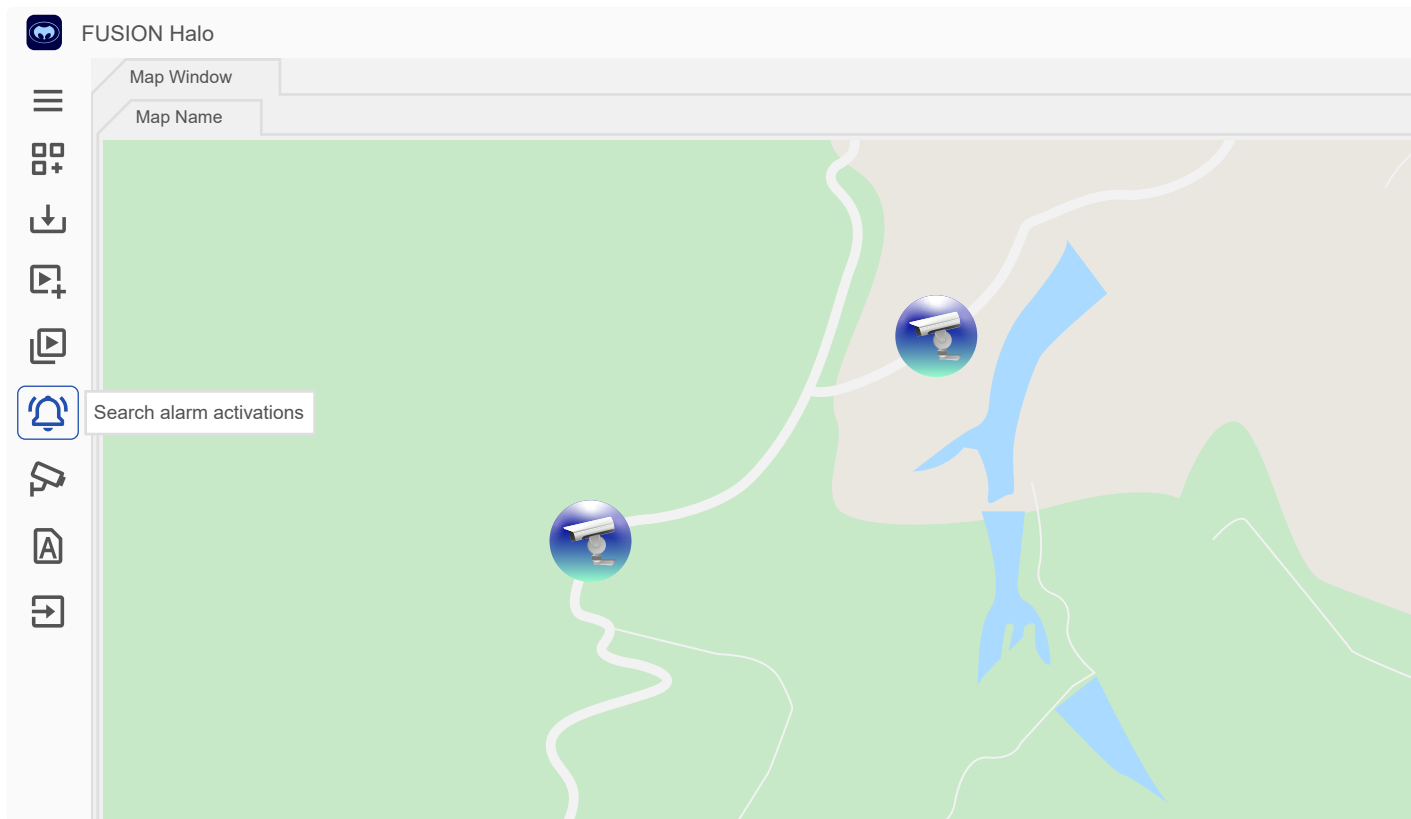
Meyertech partners with leading manufacturers from around the world to offer a wide range of security integrations.



EFFORTLESS TO USE

Developed on the leading interface of its predecessor, Halo boasts a truly streamlined layout that is easy to navigate and effortless to use.

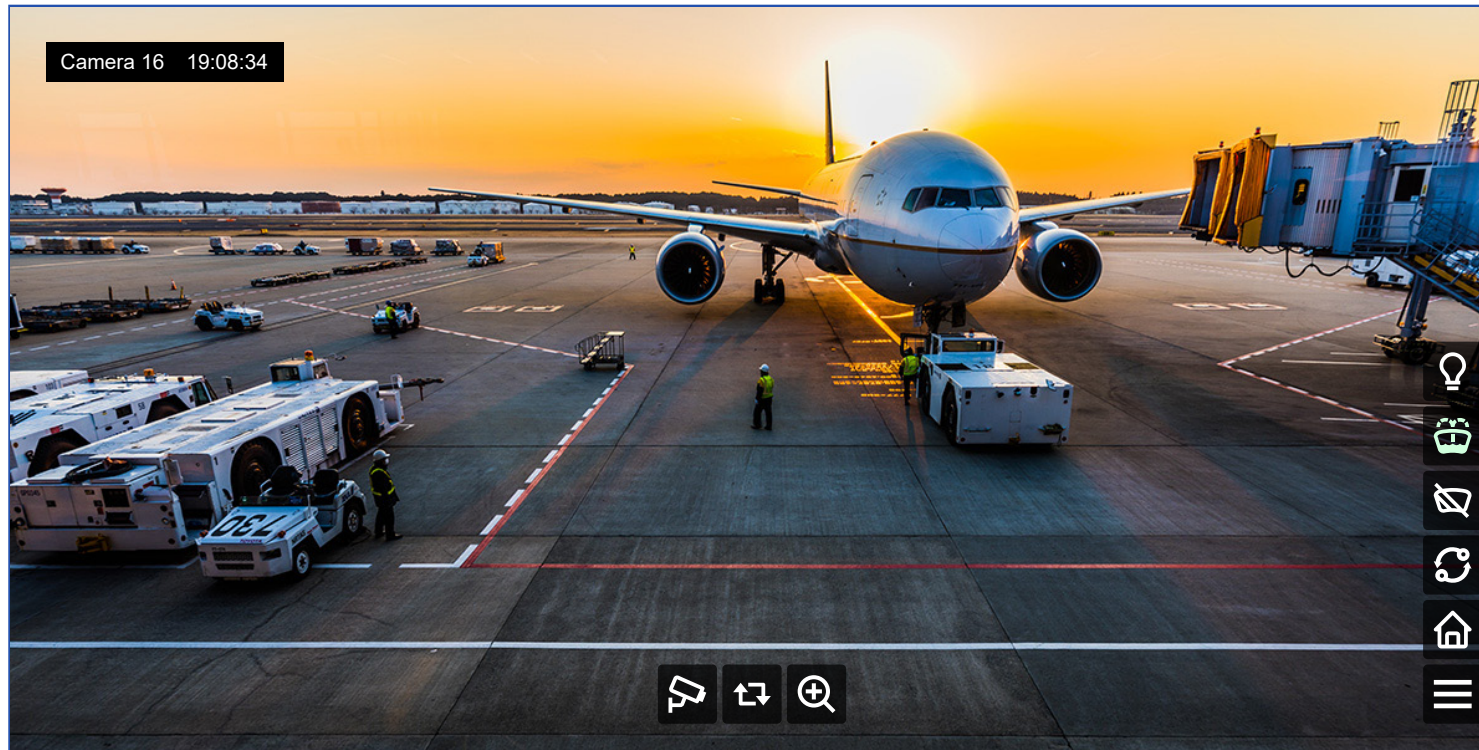
By redesigning the menus we have brought our most powerful features to your fingertips, and the addition of high-quality icons has made it simple to identify the resources you need.



Tooltips

Halo's intuitive interface has also been complemented by the addition of useful tooltips that help you to operate it effectively with minimal training.

FUSION Halo – Workstation 6



All new camera controls

Efficiently control your cameras with our new controls overlay that enables you to access PTZF functionality, perform auxiliary actions and enable presets, all within a single video window.

Perform actions in a single click

The controls sidebar displays the status of all your camera's actions and enables you to easily activate an action with just a single click.

ONVIF SUPPORT



Halo incorporates ONVIF interoperability to make the integration of products from different vendors simple.

End-user benefits

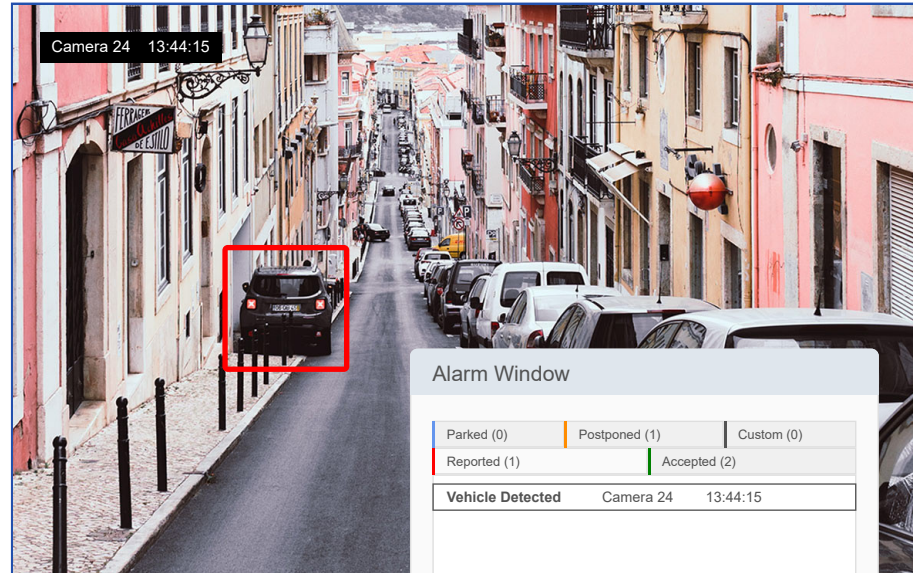
FUSION Halo future-proofs your investment by giving you the flexibility to choose the best products from numerous manufacturers to meet your requirements and not be restricted to a single brand solution.

Integrator system benefits

Through its interoperability with ONVIF conformant devices, Halo provides a flexible and cost-effective unified security platform, allowing you to be confident in your design solution.

MAIN FEATURES

FUSION Halo – Workstation 3



Open platform VMS

FUSION Halo VMS is open platform and supported by an SDK and API.

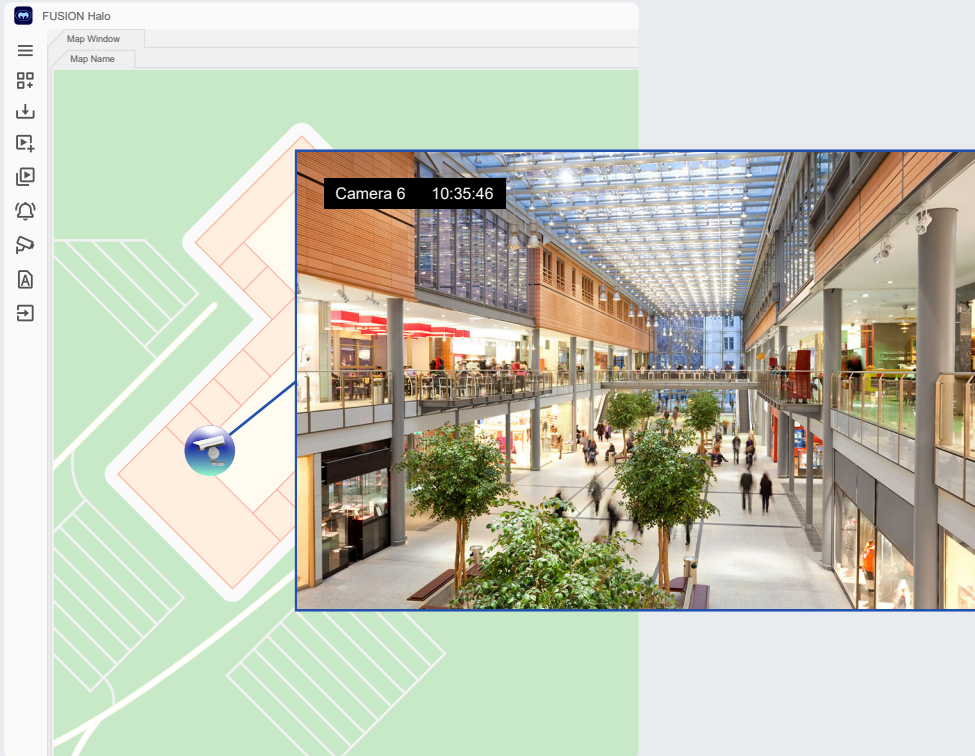
Developed to unify, it offers an agile solution from which to manage your security and safety systems by continually evolving to harness new innovations and emerging technologies.

H.265 support

Halo utilises H.265 to deliver enhanced compression on video streams – improving the quality of video from your cameras and reducing the amount of storage required.

Powerful AI and analytics

Create an AI-powered security platform through integrations with leading AI and video analytic vendors to quickly identify events to better protect your site.



Unlimited cameras, users and sites

Halo supports an unlimited number of cameras, users and sites to provide a flexible security solution that can scale with your needs.

Resilient and reliable

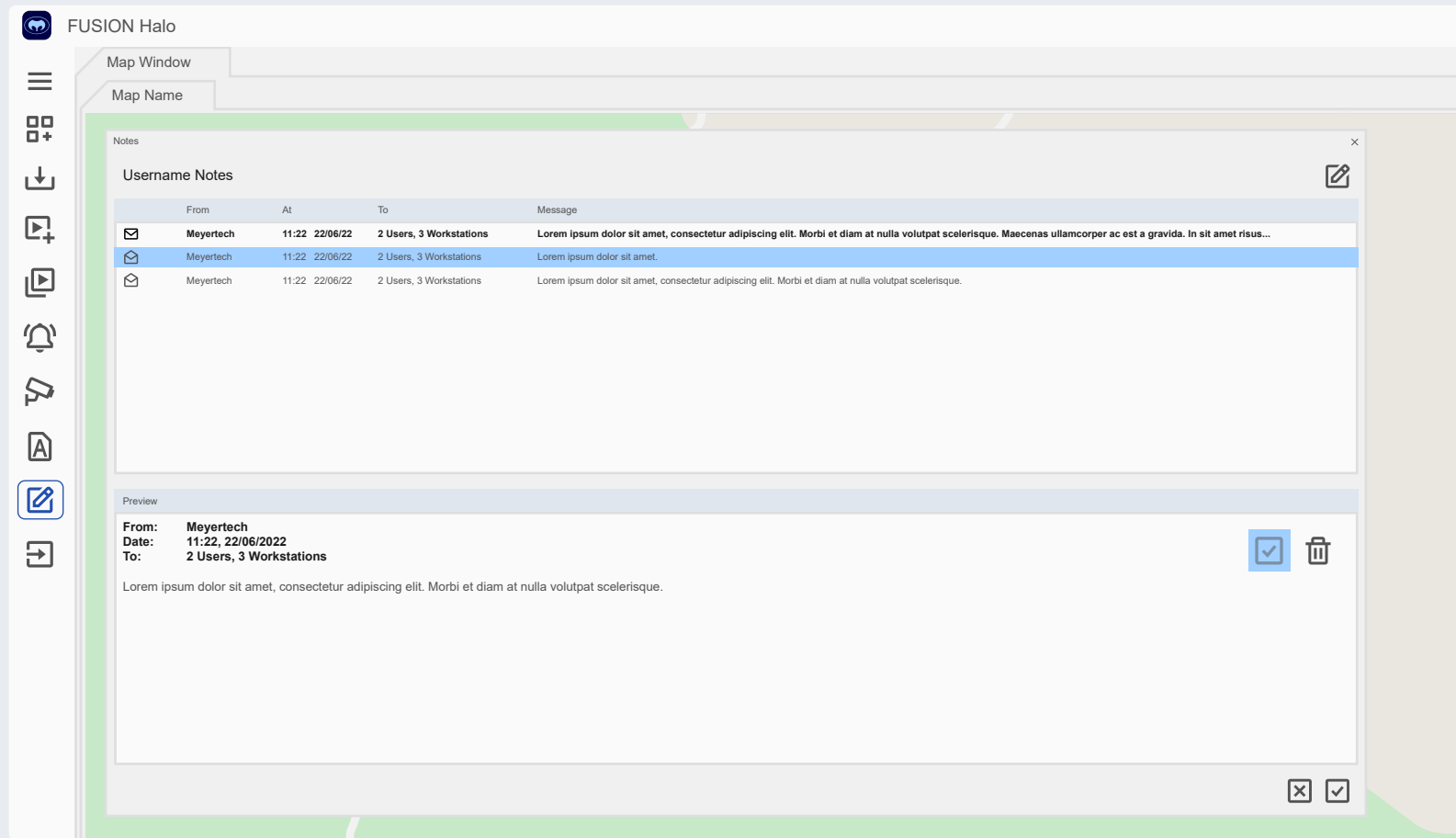
With built-in automatic failover technology, you can ensure uninterrupted use of your security system, even if you lose connection to your primary server.

Secure user management

Easily manage user access rights with dynamic and group-based permissions that can be configured down to individual devices and functions on your security system.

Web browser support

Display websites and RTSP streams directly through the FUSION interface. Browsers can be shown on workstations and monitor walls to provide a resource for the whole control room.



Notes

Notes is a new feature in FUSION Halo which enables operators to easily communicate with each other during and between shifts.

Acting as your personal inbox in FUSION, you can write to and review messages from operators, groups or workstations to improve coherency in your control room.

PLUG-IN APPS

Add new features to your security system at any time with our licensed plug-in apps.



Incident

Take the effort out of reporting incidents in a busy control room environment. With our incident management plug-in, you can easily create, view and edit comprehensive incident reports in minutes.



Audit

Easily monitor all of the equipment and operational tasks across your security network with Audit. Using its powerful features you can record, filter and analyse detailed activity reports to produce audit trails and gain insights into your system's performance.

PLUG-IN APPS



Video Wall

Expand the capabilities of your security system with a multi-media video wall. Controlled using the Halo interface, you can easily display a multitude of live video feeds and apps to create a universal resource for the whole control room.



Network Video Storage (NVS)

NVS is our open platform storage solution that communicates with any IP camera via ONVIF to record and store video streams. The recorded footage is stored on your NVS media server and can be accessed to playback video footage using the Halo interface.

HALO SPECS

Specifications	
Number of Cameras, Encoders, Monitors, Workstations/Clients, Management servers, Recording servers, Stream servers	Unlimited
Live video streams per workstation/monitor wall	Unlimited up to hardware performance capability
Playback sessions per workstation	Unlimited up to hardware performance capability
Alarm inputs	Unlimited
User accounts, groups and priority levels	Unlimited
Analogue matrixes	100
Analogue matrix connections	Unlimited
Site graphics	Unlimited
Site graphics formats	BMP, JPEG, PNG, TIFF, GIF, XAML (Vector), OS MasterMap (Deep Zoom)
Native video formats	H.264, H.265
SDK video formats	MJPEG, MPEG-4, H.264, H.265
Native snapshot formats	PNG, JPG, JPEG, GIF
Native video export format	MP4
Network video transport protocols	UDP, TCP, Unicast & Multicast
Video integrations	Bosch, Cisco, Axis, Hikvision, Nuuo, Tecton, Veracity, Vigilant, Wavestore, VideoGuard, Panasonic, DVTel, Videcon, Heitel / WCCTV, Vemotion, Indigo Vision, BAE UVMS, Electrosonic, Jupiter, Dahua

HALO SPECS

Specifications	
ONVIF support	Profile S Conformant Profile T Compatible Profile G Compatible
ONVIF features	Device discovery Device configuration Camera view and PTZ control Encoder view and PTZ control Peripheral equipment control NVR view, replay and download Alarm and event monitoring
IP Alarm/Peripheral integrations	Bosch, Axis, Eaton/Menvier, Xplan, Salto, OPC, VideoGuard, Zenco
Analogue equipment integrations	See ZoneVu support lists
Operating systems	Windows 10, Windows Server 2016 or later

FEATURE LIST

General
Customisable GUI with unlimited layouts
Tooltips for ease of use
Support for all ZoneVu analogue equipment
Automatic failover with redundant management, recording and stream servers
Stream servers for most efficient use of network bandwidth
Integrated monitoring of system health and alerts on device failures
In-app views of server statuses to show system health
Multi-media video wall integration
Display web pages in video windows
Display any PC screen in video windows via VNC
Monitor tracking control for fast relaying of video feeds
Smart search for cameras, sites, maps, street names and more
Configurable keyboard function keys
Placeable icon bars to easily control key peripheral equipment
Task Scheduler for automated daily or weekly actions
Scripting engine for unlimited automation possibilities
Fast download of events, alarms and bookmarks
Multi-download management
Cryptographically signed video export authentication certificates
Standalone portable clip player with certificate authentication
Windows standard video player support for exported clips
Video export to removable media and integrated DVD burning tool
Optional millisecond resolution timestamp captioning on video exports

FEATURE LIST

Licensing

Perpetual licensing model

Mapping

Vector-based mapping (XAML)

High-quality map icons to easily identify equipment and resources

Multi-state icons for control and device status

Pan-tilt-zoom (PTZ)

100% un-obscured video views

On-demand video controls with transparent fade

Joystick or mouse driven PTZ control

Unlimited PTZ control priority levels

PTZ in live and playback modes for panoramic and 360-degree cameras

Single click preset position control with map icons

Auxiliary equipment controls (wash, wipe, lamp etc.)

Playback

Playback timeline

Fast forward and rewind up to 64x speed

Frame stepping

Instant snapshot

Linked playback sessions across cameras

Playback bookmarks and extended retention control

FEATURE LIST

User controls

Camera sequences

Patrols

Zonal switches and sequences

Auto resume/pause for sequences and patrols

Peripheral equipment controls (barriers, door release, intercoms etc.)

Zonal switches for single-click access to choose monitor/video wall layouts, camera group selections & positions, peripheral controls and more

Choice of automatic timeout functions for different cameras (auto home)

Covert viewing mode for dynamic restrictions on live and recorded footage

Automatic covert mode for privacy at preset positions

Video processing

Hardware accelerated video encoding and decoding

H.265

Dynamic video profile selection for bandwidth optimisation

Seamless live and playback switching between different supported manufacturers

Panoramic and 360-degree camera de-warping

Flexible OSD captioning including information overlays (time, date etc.)

FEATURE LIST

Alarms and events

Multi-level alarm group prioritisation

Alarms enable/disable schedules

Customisable alarm notifications (sounds and colours)

Flexible alarm responses (spot monitor display, monitor wall display, multi-segment displays, preset positions, auxiliary and external system triggers)

Alarm responses at trigger time and operator selection

Pre/Post alarm playback

Alarm playback search

Permanent, motion/alarm triggered and scheduled recording modes

Login and user management

Microsoft Active Directory (LDAP) login authentication (optional)

Group-based permissions configurable to individual devices (cameras, monitors etc.) and functions (live view, playback, download etc.)

Dynamic permissions switchable on schedule, command or external trigger

Full audit trail on all operator activities (requires Audit add-on)

In-app reporting on alarms and audited activity (with Excel/PDF export)

Add-ons

Incident reporting and management

Full system and user auditing

Multi-media video wall integration

View CCTV on mobile devices (Android mobile clients only)



Disclaimer

© 2021 Meyertech Limited. All rights reserved. The purpose of this brochure is to provide information about Meyertech products. The information contained in this brochure is believed to be accurate and reliable.

However, no responsibility or liability is assumed by Meyertech Limited for its use, or for any infringement of patents, copyrights or other rights of any third parties, which result from its use. No license is granted by implication or otherwise under any patent or other rights of Meyertech Limited.

Meyertech Limited is committed to continuous product development and therefore reserves the right to change the specification(s) of the product(s) described in this brochure without notice. Security with Vision, FUSION and ZoneVu are registered trademarks of Meyertech Limited. All other trademarks are the property of their respective owners.